

MLS Area 10S

Residential Statistics



December 2021

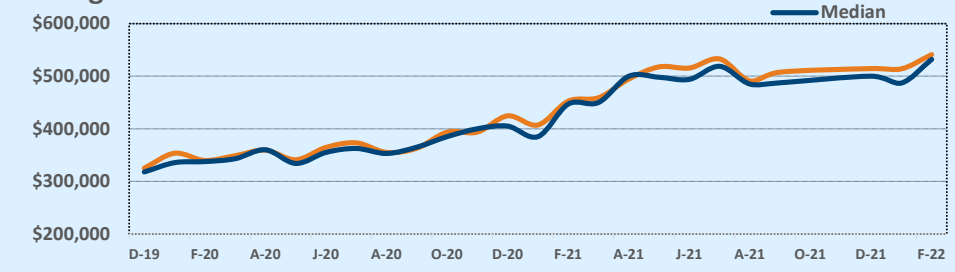
Listings	This Month			Year-to-Date		
	Dec 2021	Dec 2020	Change	2021	2020	Change
Single Family Sales	75	66	+13.6%	758	823	-7.9%
Condo/TH Sales	11	6	+83.3%	93	90	+3.3%
Total Sales	86	72	+19.4%	851	913	-6.8%
New Homes Only	--	2	--	5	13	-61.5%
Resale Only	86	70	+22.9%	846	900	-6.0%
Sales Volume	\$44,248,509	\$30,570,650	+44.7%	\$423,744,910	\$337,008,766	+25.7%
New Listings	45	38	+18.4%	970	935	+3.7%
Pending	--	--	--	--	--	--
Withdrawn	1	--	--	18	13	+38.5%
Expired	1	--	--	18	13	+38.5%
Months of Inventory	0.3	0.2	-7.9%	N/A	N/A	--

Price Range	This Month			Year-to-Date		
	New	Sales	DOM	New	Sales	DOM
\$149,999 or under	--	--	--	--	--	--
\$150,000- \$199,999	--	--	--	--	--	--
\$200,000- \$249,999	--	--	--	7	1	3
\$250,000- \$299,999	--	1	9	18	9	13
\$300,000- \$349,999	1	2	22	61	30	11
\$350,000- \$399,999	6	6	30	161	104	9
\$400,000- \$449,999	7	14	27	144	129	11
\$450,000- \$499,999	9	18	25	224	192	10
\$500,000- \$549,999	11	18	34	131	138	12
\$550,000- \$599,999	2	12	23	110	118	11
\$600,000- \$699,999	7	9	30	82	96	11
\$700,000- \$799,999	1	5	3	18	21	8
\$800,000- \$899,999	1	1	4	5	9	6
\$900,000- \$999,999	--	--	--	2	2	8
\$1M - \$1.99M	--	--	--	7	2	7
\$2M - \$2.99M	--	--	--	--	--	--
\$3M+	--	--	--	--	--	--
Totals	45	86	26	970	851	10

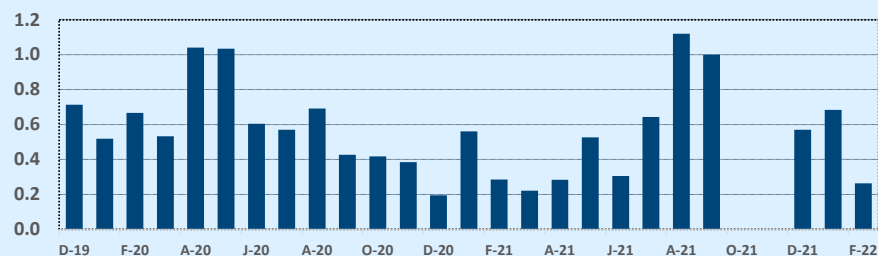
Average	This Month			Year-to-Date		
	Dec 2021	Dec 2020	Change	2021	2020	Change
List Price	\$504,020	\$414,783	+21.5%	\$466,873	\$364,698	+28.0%
List Price/SqFt	\$318	\$256	+24.2%	\$300	\$231	+30.2%
Sold Price	\$514,518	\$424,592	+21.2%	\$497,938	\$369,122	+34.9%
Sold Price/SqFt	\$324	\$262	+23.9%	\$321	\$234	+37.2%
Sold Price / Orig LP	102.2%	102.5%	-0.3%	107.3%	101.3%	+5.9%
Days on Market	26	15	+73.6%	10	16	-34.7%

Median	This Month			Year-to-Date		
	Dec 2021	Dec 2020	Change	2021	2020	Change
List Price	\$499,900	\$392,450	+27.4%	\$455,000	\$359,000	+26.7%
List Price/SqFt	\$310	\$251	+23.6%	\$295	\$225	+31.2%
Sold Price	\$500,000	\$405,000	+23.5%	\$485,150	\$361,500	+34.2%
Sold Price/SqFt	\$312	\$262	+19.0%	\$315	\$227	+38.6%
Sold Price / Orig LP	100.3%	100.4%	-0.2%	105.0%	100.1%	+4.9%
Days on Market	13	5	+160.0%	5	5	--

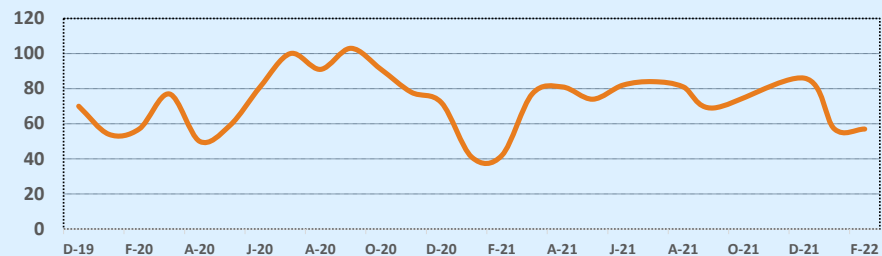
Average & Median Sales Price - Last Two Years



Months of Inventory - Last Two Years



Number of Sales - Last Two Years



Based on information from the Austin Board of REALTORS® (alternatively, from ACTRIS). Neither the Board nor ACTRIS guarantees or is in any way responsible for its accuracy. The Austin Board of REALTORS®, ACTRIS and their affiliates provide the MLS and all content therein "AS IS" and without any warranty, express or implied. Data maintained by the Board or ACTRIS may not reflect all real estate activity in the market.